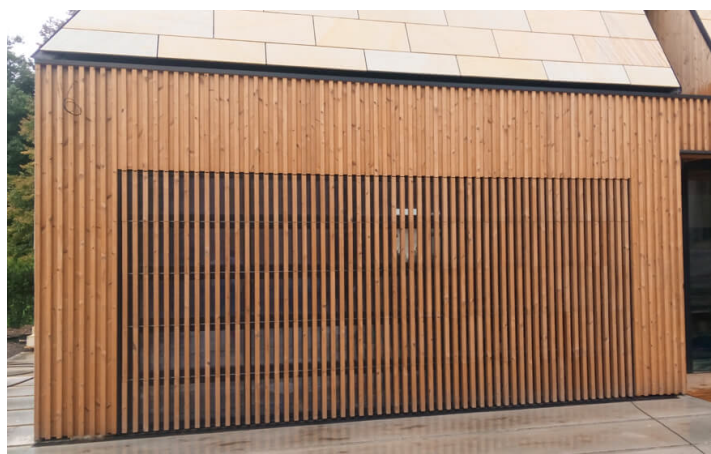


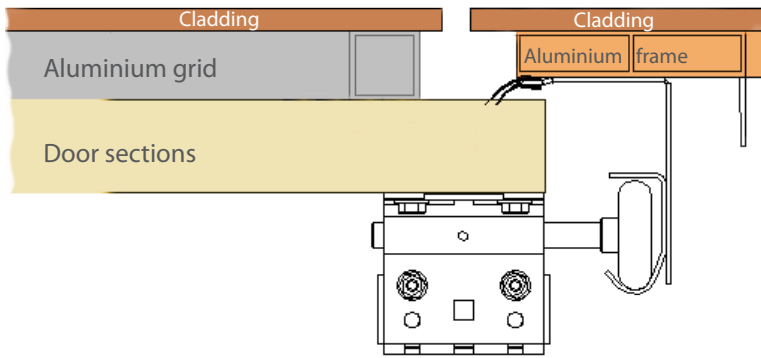
FACADE FLUSH sectional doors



**Want to get a perfect match, stand out with original design or conceal your garage door?
Ryterna 'facade-flush' garage door system is for you!**



Top View

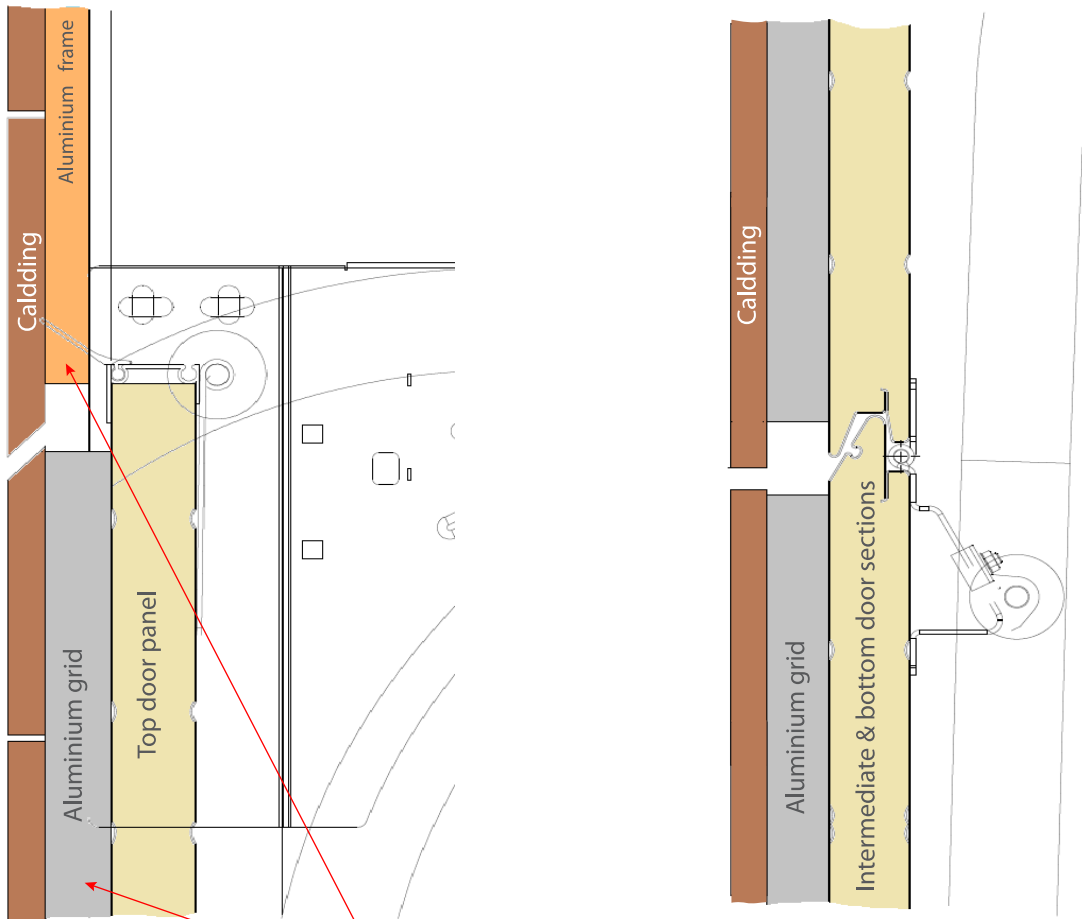


Aluminium frame with 180 mm lintel required.
LHR-RM track system only.

For drawings and calculations, cladding material specifications are necessary: thickness, sheet size and weight.

For 'Facade-flush' system add €250 per m² to door & aluminium frame price.
Cladding materials not included.

Side View



Aluminium frame installed in between the opening
Aluminium grid for cladding fixing to the door



Facade, aluminium frame and aluminium grid is on one plane.